

Truck Explorer®

Software installation v 6.xx

VEI device activation

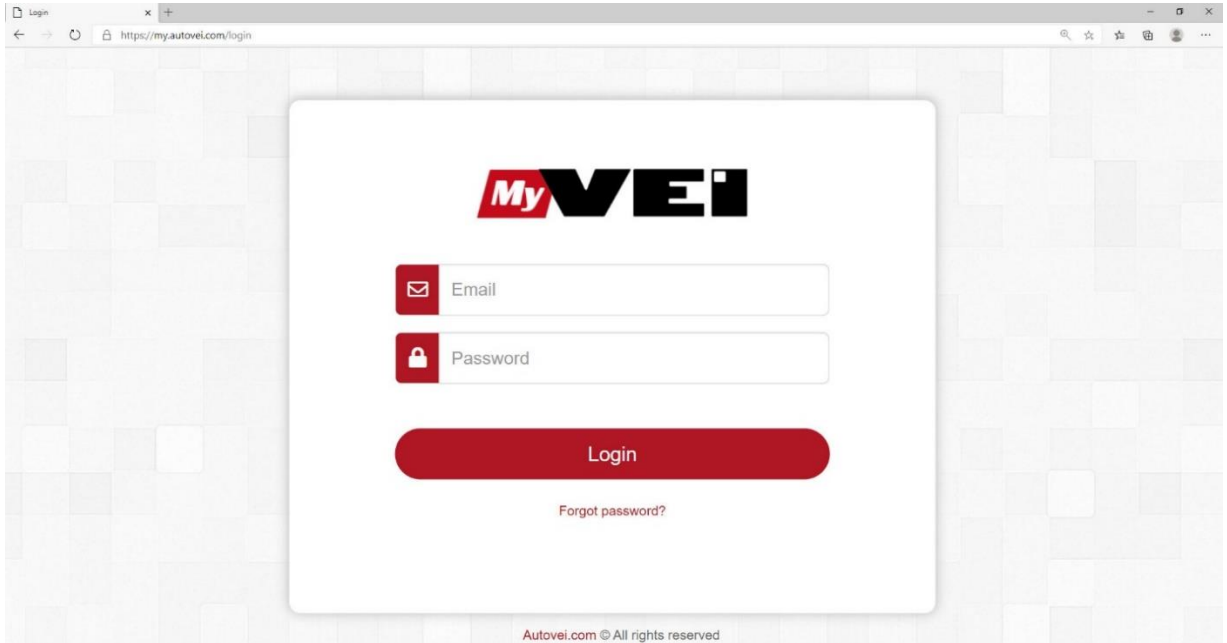
User manual, containing first run information
about Truck Explorer software and Vehicle Explorer Interface (VEI)

September, 2020

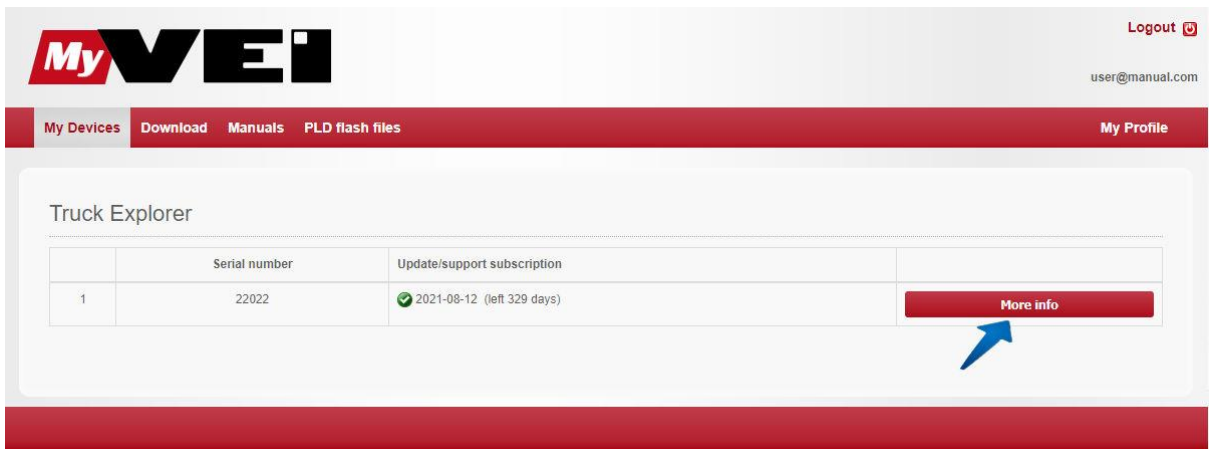


2

1. When your parcel is delivered and you received your VEI device, inform your sales manager (or dealer) and ask for device activation.
2. Your sales manager will create you a user in <https://my.autovei.com> and will send you login details.
3. With your login details login to <https://my.autovei.com>.



4. After you logged in, you will see a list of devices serial numbers. Choose a device and press button "MORE INFO".



3

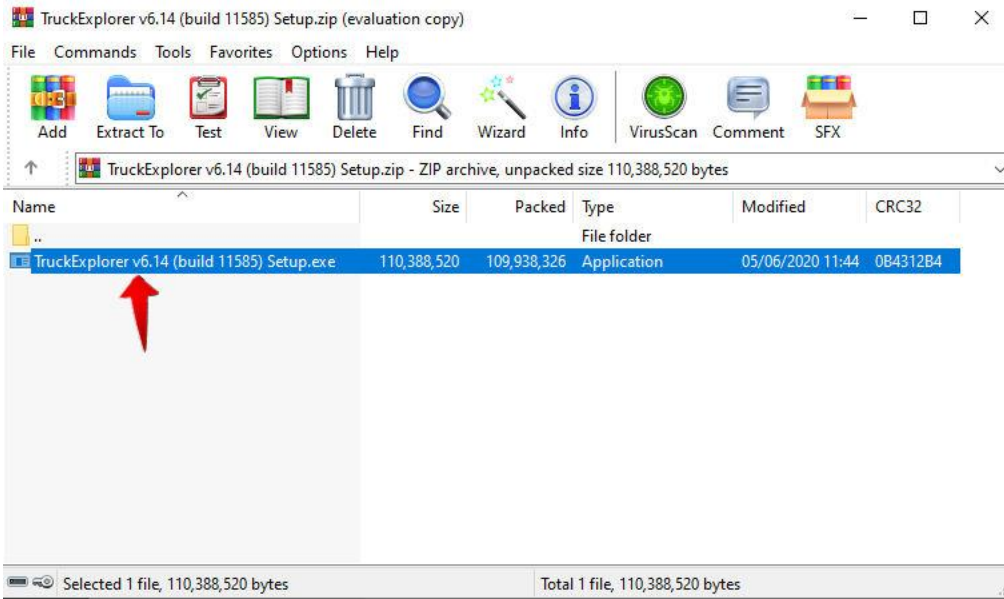
5. Then download software to your computer. Only this version of software will be accepted by VEI device.

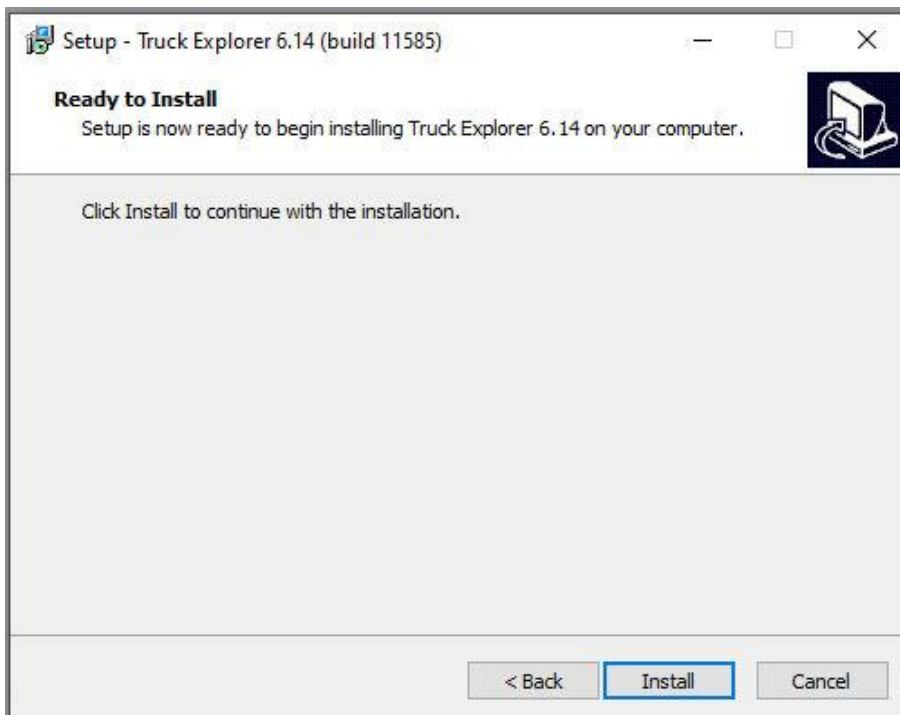
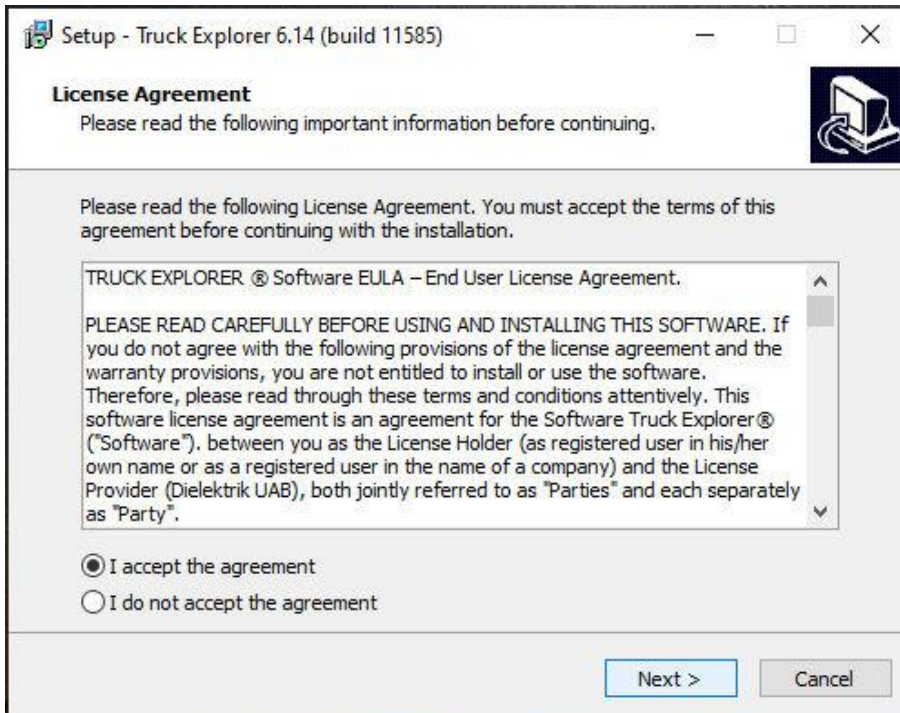
The screenshot shows the MyVEI web interface for a user named 'user@manual.com'. The main navigation bar includes 'My Devices', 'Download', 'Manuals', and 'PLD flash files'. The user's profile is visible in the top right corner. The main content area displays the VEI #22022 details, including the subscription status (Update/support until: 2021-08-12), device licenses (ANDROID, DC2, MB), and device status (WORKING). A blue arrow points to the 'Download software v6.14 (build 11585)' button, which is highlighted in red. Other buttons visible include 'History' and 'Edit'.

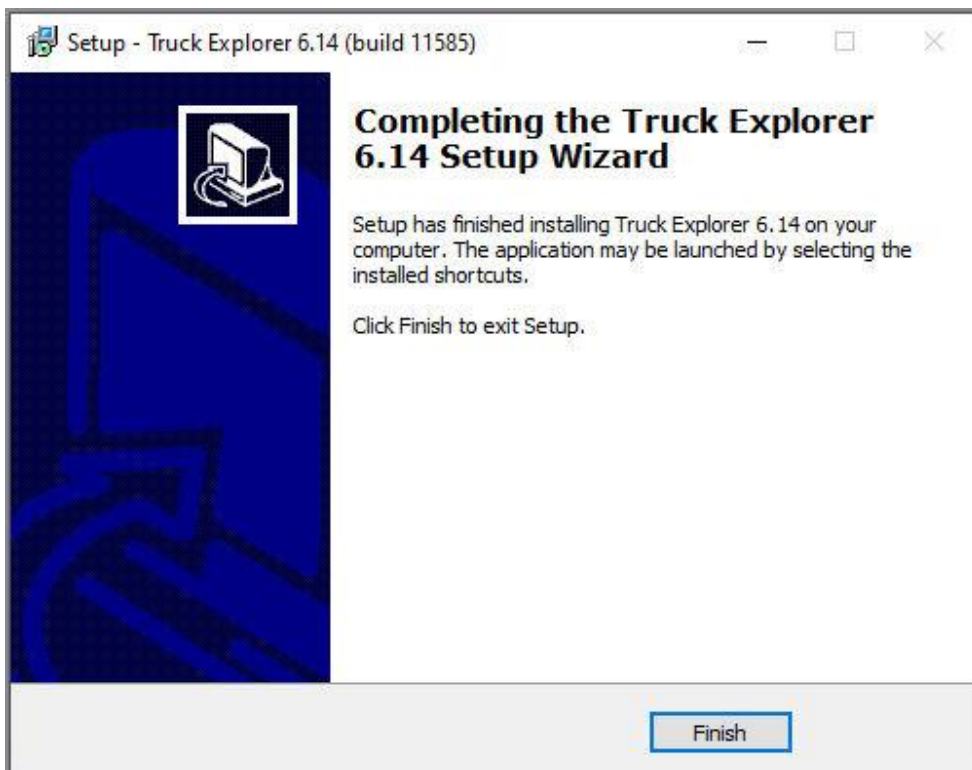
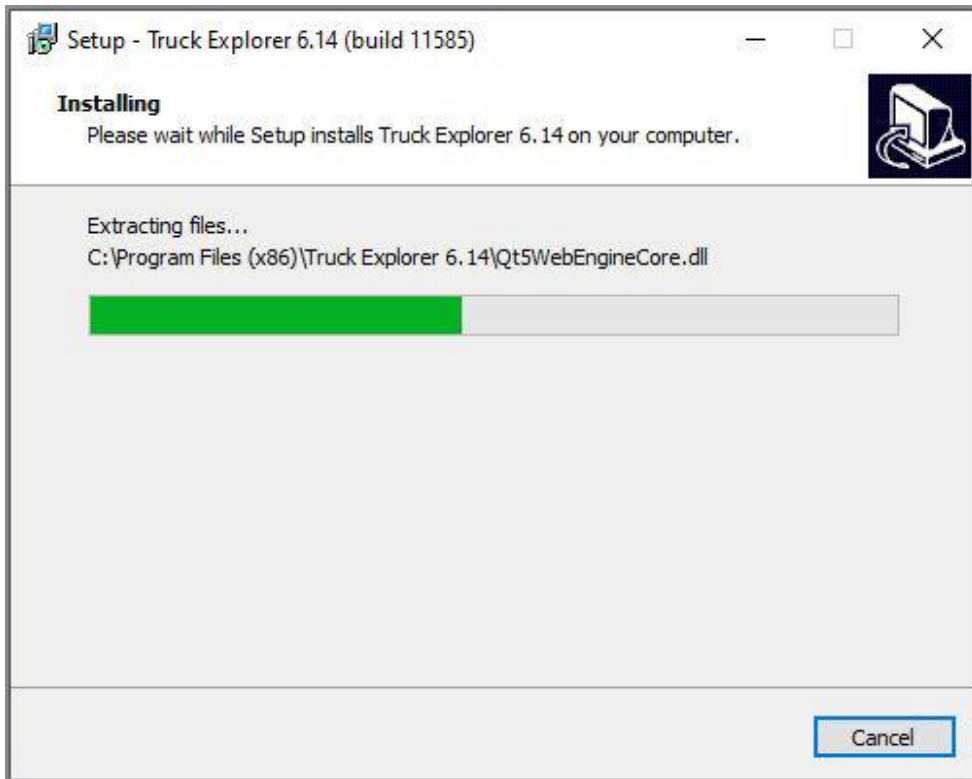
6. Open downloaded ZIP file and Install Truck Explorer setup.

Minimal requirements for software v6.x:

1. VEI hardware V6 (Product number: D18xxxx or D20xxxx)
2. Microsoft Windows 7 (SP1), or Windows 10 with all updates.
3. OpenGL 2.0 (**important!**) [How to check?](#)
4. HDD 500 MB free space
5. 4 GB RAM
6. Intel Pentium i3 CPU or greater







7

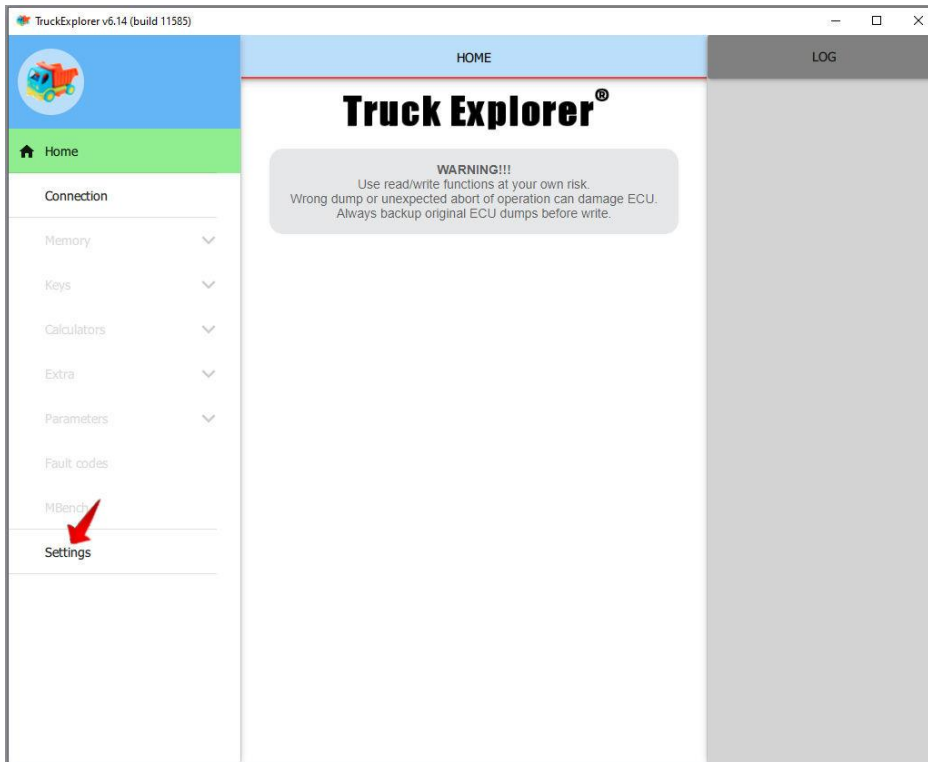
7. When installation is finished, connect your VEI device to your computer.



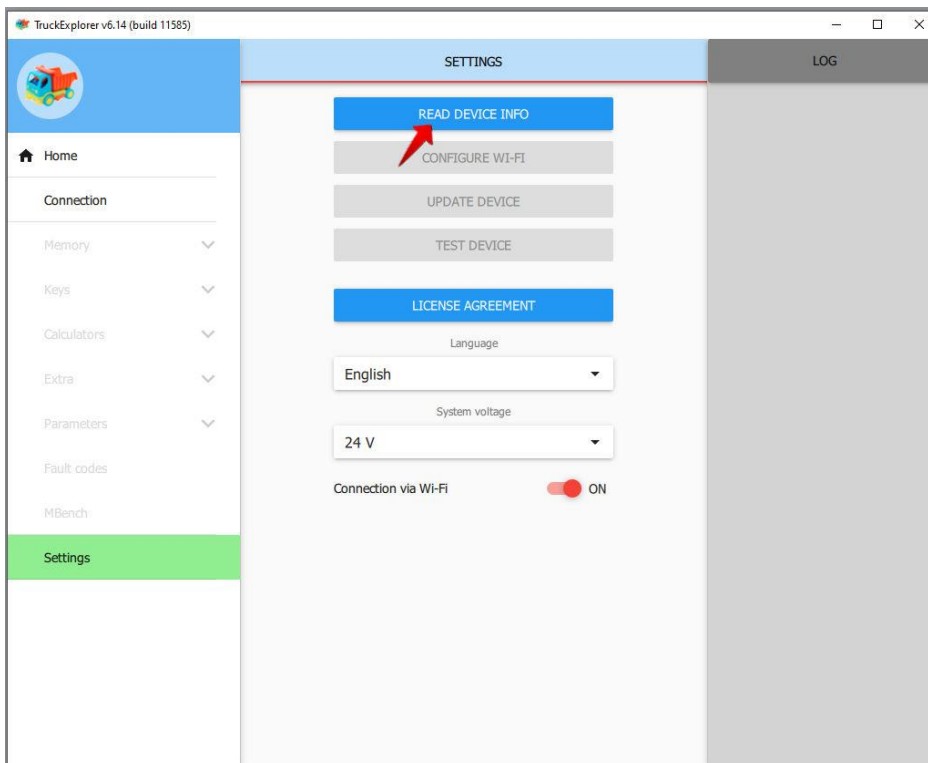
8. Open Truck Explorer program by pressing on Desktop icon "Truck Explorer v6.xx".



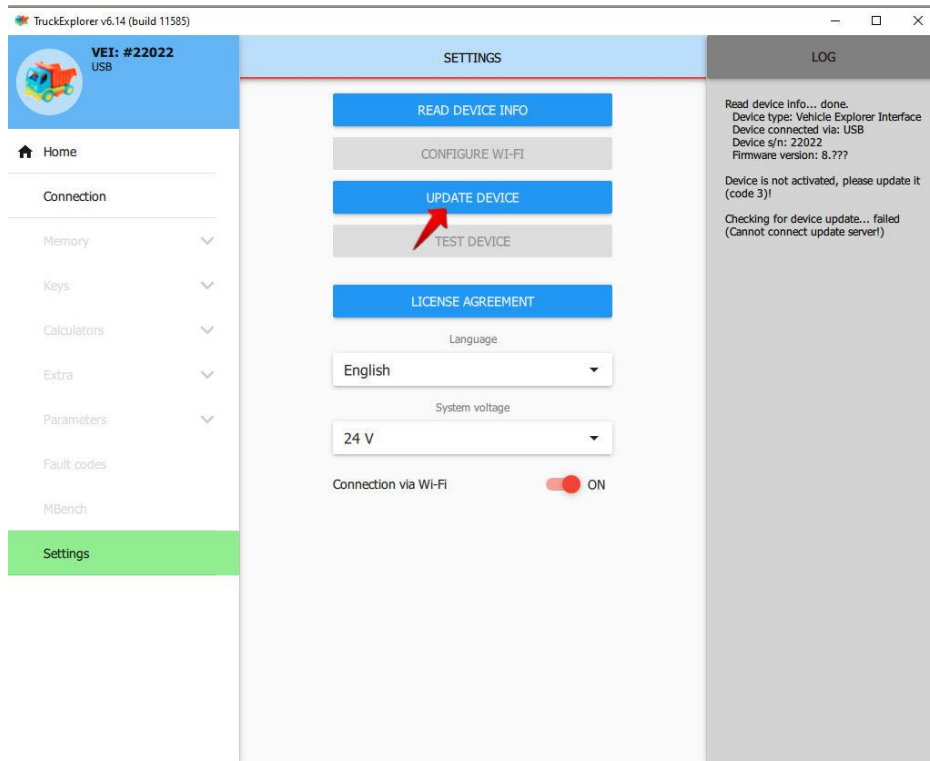
9. When app is opened, go to "SETTINGS".



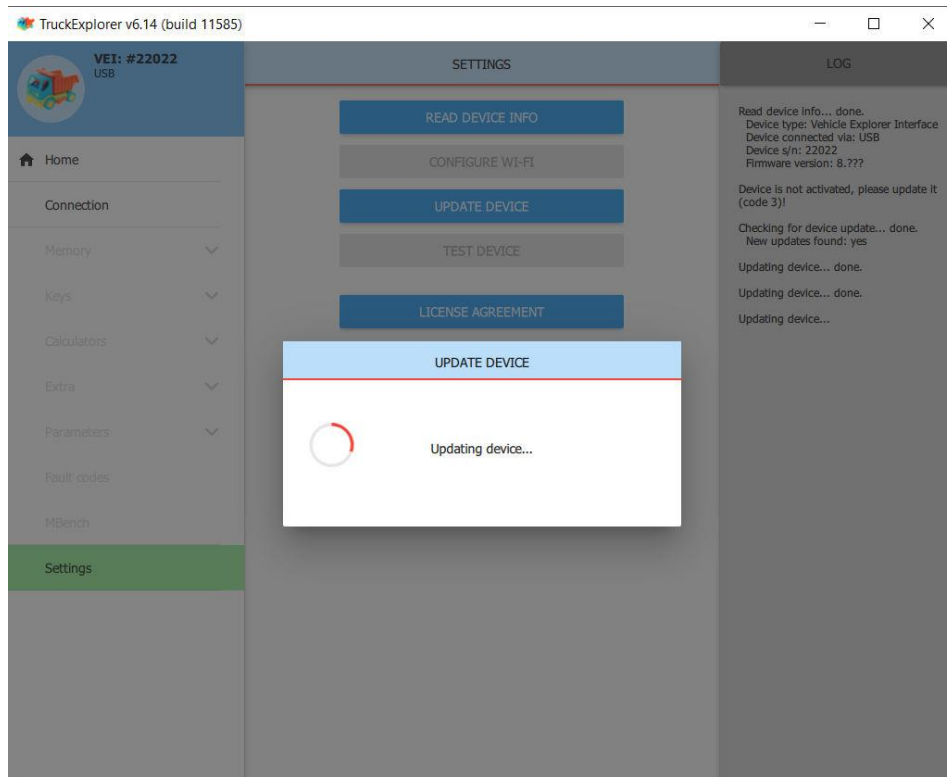
10. In settings, press “READ DEVICE INFO”.



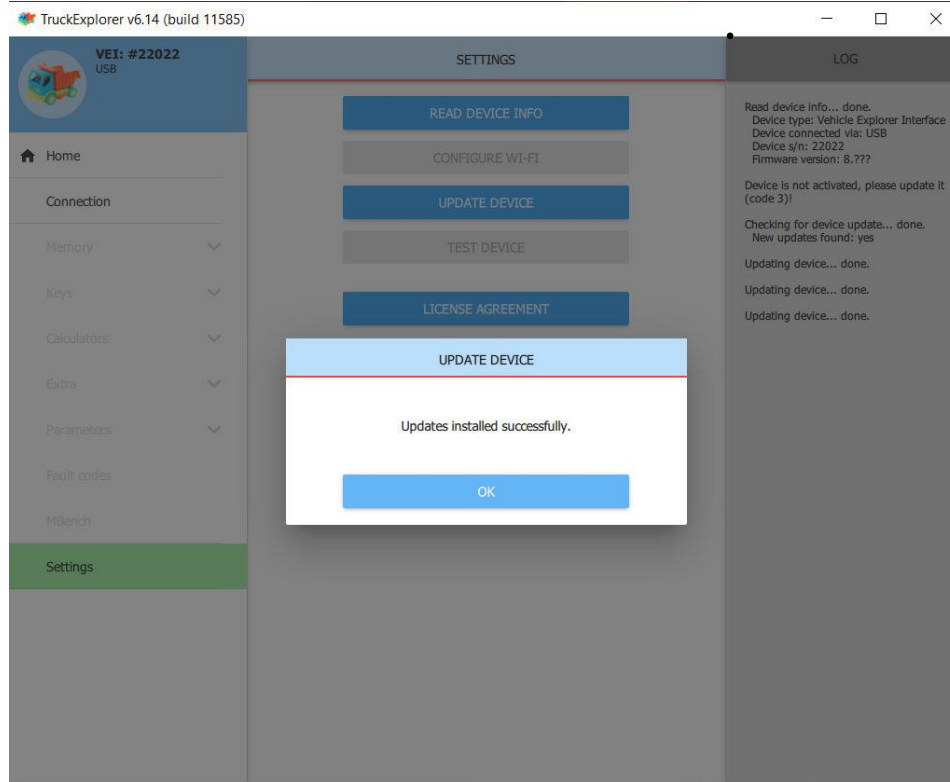
- When your device is recognised, press "UPDATE DEVICE". Ensure that you have stable internet connection.



- Update process will take around 5 minutes.



- When updates were installed successfully, your device is ready to use!



14. In a right side of software, you will see a LOG file, where all information about VEI device firmware version, inside licenses, Support date and received Tokens!

